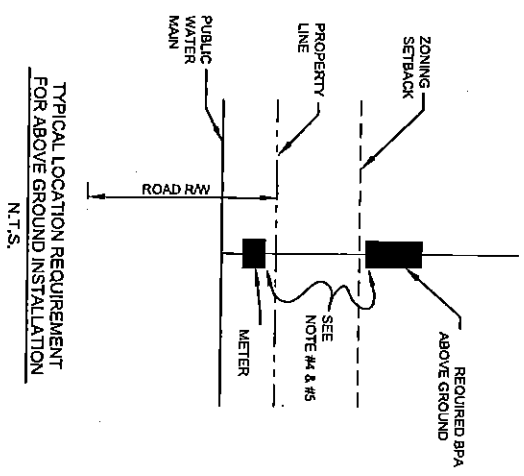


- NOTES:
1. BACKFLOW PREVENTION ASSEMBLIES (BPA) SHALL CONFORM TO SPECIFICATIONS. SHUT-OFF VALVES ARE SPECIFIC TO EACH APPROVED BPA AND NO SUBSTITUTIONS OF SHUT-OFF VALVES ARE PERMITTED.
  2. PIPE MATERIAL AND FITTINGS SHALL BE AS SPECIFIED IN STANDARDS & SPECIFICATIONS.
  3. INSULATED ENCLOSURE SHALL BE AS SPECIFIED IN ENCLOSURE INFORMATION. HEATED INSULATED ENCLOSURE IS RECOMMENDED. NO INSULATION SHALL BE WRAPPED AROUND BPA.
  4. ALL LOCATIONS FOR BPAs REQUIRE APPROVAL AND MUST BE OUTSIDE OF ZONING SET-BACK.
  5. THERE SHALL BE NO TAPS, PIPING BRANCHES, UNAPPROVED BYPASS PIPING, HYDRANTS, FIRE DEPT. CONNECTION POINTS, OR OTHER WATER - USING APPURTENANCES CONNECTED TO THE SUPPLY LINE BETWEEN ANY WATER METER AND ITS REQUIRED BACKFLOW PREVENTER.



TYPICAL LOCATION REQUIREMENT FOR ABOVE GROUND INSTALLATION  
N.T.S.

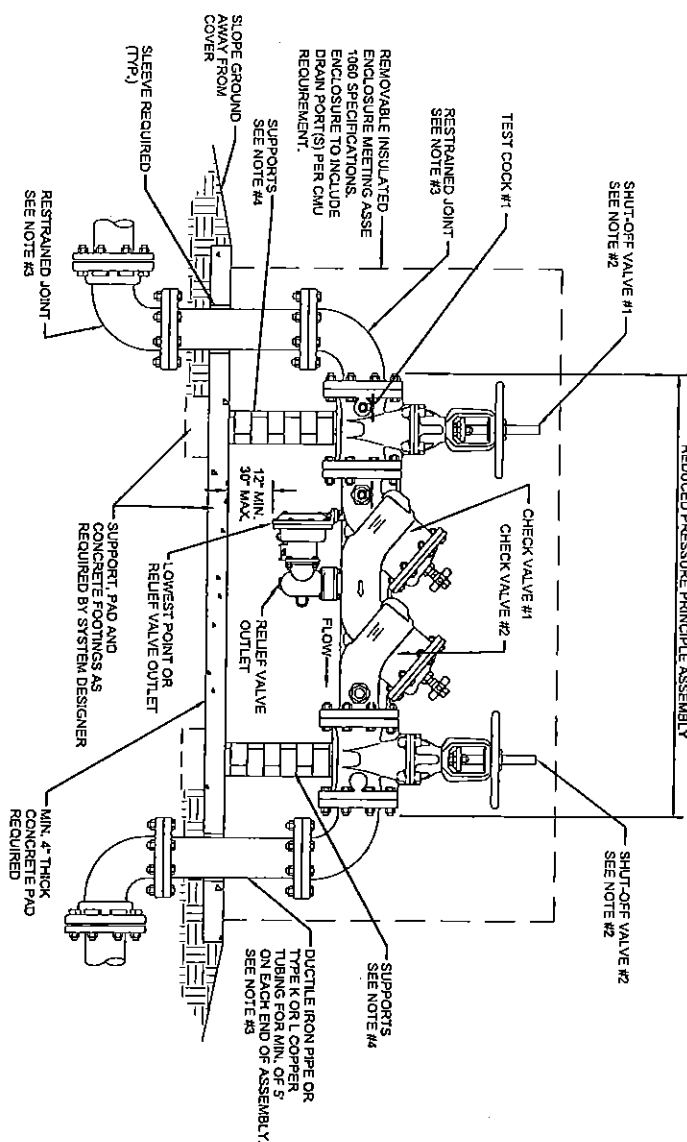
NO SCALE  
STANDARD NO.

1	VERSION NO.	VERSION DATE
1.1		2-13-15



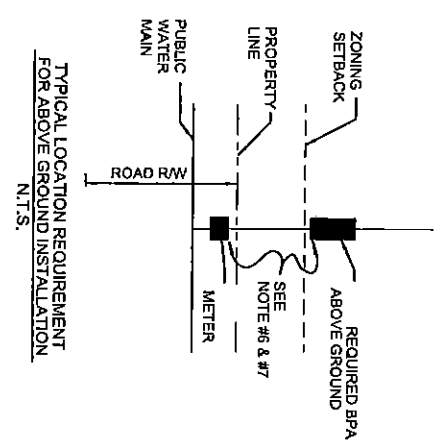
Town of Oriental  
STANDARD DETAILS  
BACKFLOW PREVENTION

REDUCED PRESSURE PRINCIPLE ASSEMBLY (RP) 1 1/2" & 2" ABOVE GROUND



REDUCED PRESSURE PRINCIPLE ASSEMBLY

- NOTES:
1. BACKFLOW PREVENTION ASSEMBLIES (BPAs) SHALL CONFORM TO ALL J SPECIFICATIONS. SHUT-OFF VALVES ARE SPECIFIC TO EACH APPROVED BPA AND NO SUBSTITUTIONS OF SHUT-OFF VALVES ARE PERMITTED.
  2. FIRE LINE SERVICES SHALL HAVE OUTSIDE STEM AND YOKE (OS & Y) HANDWHEEL OPERATORS. IF SERVING FIRE SPRINKLERS, TAMPER SWITCHES ARE REQUIRED.
  3. PIPE MATERIAL AND FITTINGS SHALL BE AS SPECIFIED IN STANDARDS SPECIFICATION. ALL JOINTS SHALL BE RESTRAINED WITH METALLIC RESTRAINTS OR APPROVED EQUAL.
  4. SUPPORT OF ASSEMBLY SHALL BE DESIGNED BY OWNER. 8" - 12" SHALL BE SUPPORTED AT EACH VALVE AND SHALL NOT BLOCK RELIEF VALVE ON DRAIN PORT.
  5. INSULATED ENCLOSURE SHALL BE AS SPECIFIED IN ENCLOSURE INFORMATION - HEATED INSULATED ENCLOSURE ARE REQUIRED FOR FIRE LINE SERVICES. NO INSULATION SHALL BE WRAPPED AROUND BPA OUTSIDE OF ZONING SET-BACK.
  6. ALL LOCATIONS FOR BPAs REQUIRE APPROVAL AND MUST BE OUTSIDE OF ZONING SET-BACK.
  7. THERE SHALL BE NO TAPS, PIPING BRANCHES, UNAPPROVED BYPASS PIPING, HYDRANTS, FIRE DEPT. CONNECTION POINTS, OR OTHER WATER- USING APPURTENANCES CONNECTED TO THE SUPPLY LINE BETWEEN ANY WATER METER AND ITS REQUIRED BACKFLOW PREVENTER.
  8. EACH APPROVED BPA IS REQUIRED TO BE TESTED BY A SYSTEM IN SERVICE.
  9. ALL BACKFLOW PREVENTERS INTENDED FOR ADDRESSING FROM THE APPROPRIATE REQUIREMENTS, REQUIRE PRIOR APPROVAL FROM THE APPROPRIATE BACKFLOW INSPECTOR.



TYPICAL LOCATION REQUIREMENT FOR ABOVE GROUND INSTALLATION N.T.S.

NO SCALE  
STANDARD NO.

2

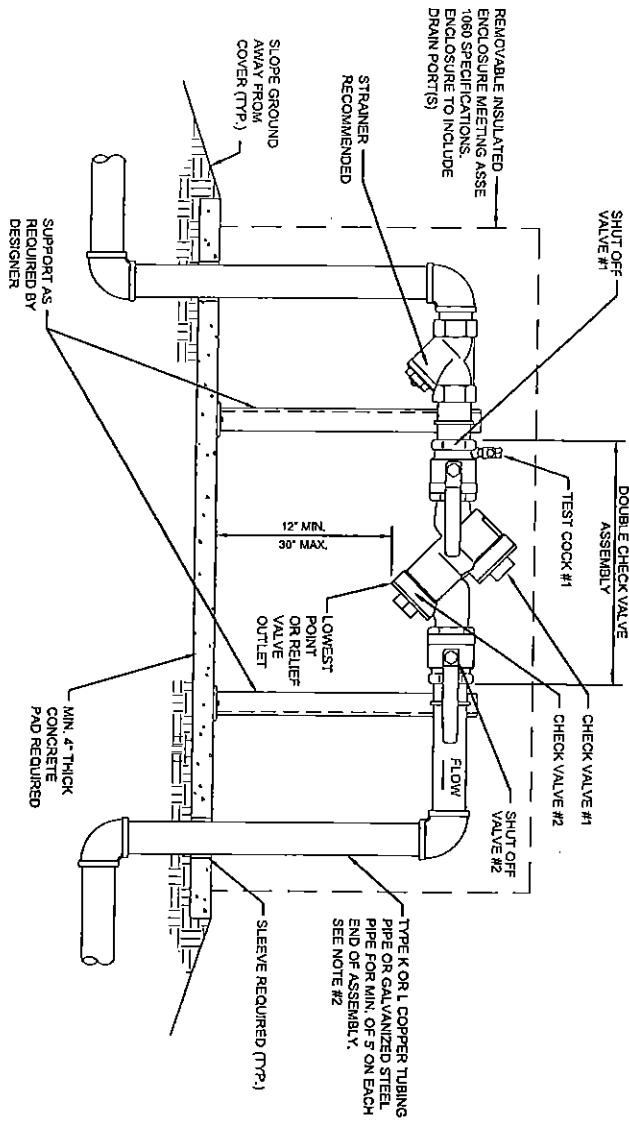
VERSION NO. 1.2  
VERSION DATE 2.13.15

REDUCED PRESSURE PRINCIPLE ASSEMBLY (RP) 2 1/2" - 12" ABOVE GROUND

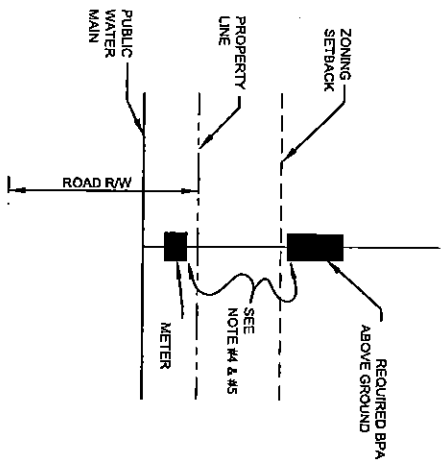
Town of Oriental

STANDARD DETAILS  
BACKFLOW PREVENTION

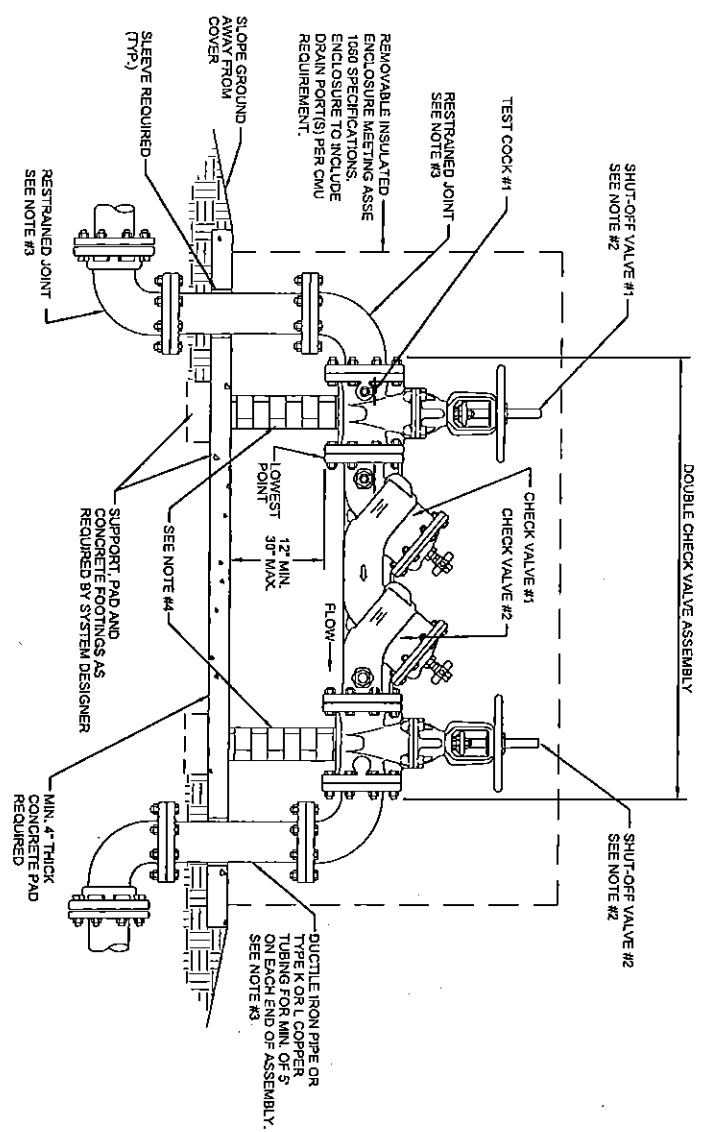




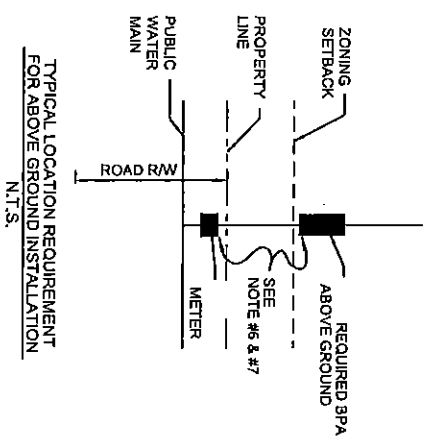
- NOTES:
1. BACKFLOW PREVENTION ASSEMBLIES (BPAs) SHALL CONFORM TO SPECIFICATIONS. SHUT-OFF VALVES ARE SPECIFIC TO EACH APPROVED BPA AND NO SUBSTITUTIONS OF SHUT-OFF VALVES ARE PERMITTED.
  2. PIPE MATERIAL AND FITTINGS SHALL BE AS SPECIFIED IN STANDARDS & SPECIFICATIONS.
  3. INSULATED ENCLOSURE SHALL BE AS SPECIFIED IN ENCLOSURE INFORMATION - HEATED INSULATED ENCLOSURE IS RECOMMENDED, NO INSULATION SHALL BE WRAPPED AROUND BPA.
  4. ALL LOCATIONS FOR BPAs REQUIRE APPROVAL AND MUST BE OUTSIDE OF ZONING SET-BACK.
  5. THERE SHALL BE NO TAPS, PIPING BRANCHES, UNAPPROVED BYPASS PIPING, HYDRANTS, FIRE DEPT. CONNECTION POINTS OR OTHER WATER - USING APPURTENANCES CONNECTED TO THE SUPPLY LINE BETWEEN ANY WATER METER AND ITS REQUIRED BACKFLOW PREVENTER.
  6. EACH REQUIRED BPA IS REQUIRED TO BE TESTED BY A CERTIFIED TESTER PRIOR TO PLACING THE WATER SYSTEM IN SERVICE.
  7. ALL BACKFLOW PREVENTERS INTENDED FOR ADDRESSING FROM THE APPROPRIATE REQUIREMENTS, REQUIRE PRIOR APPROVAL BACKFLOW INSPECTOR.

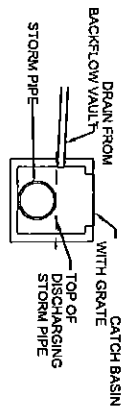
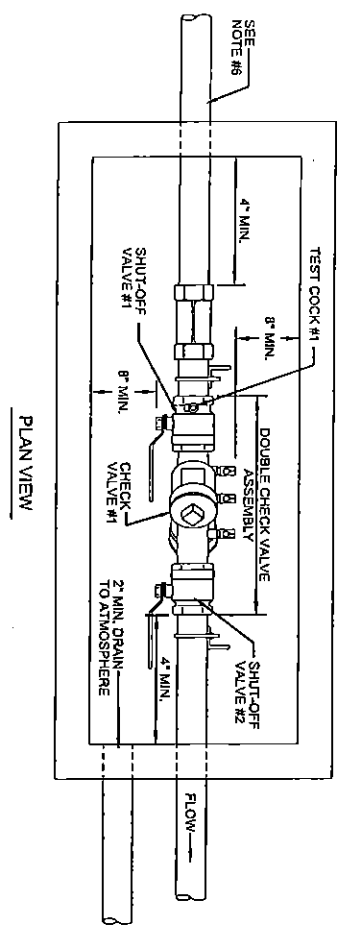
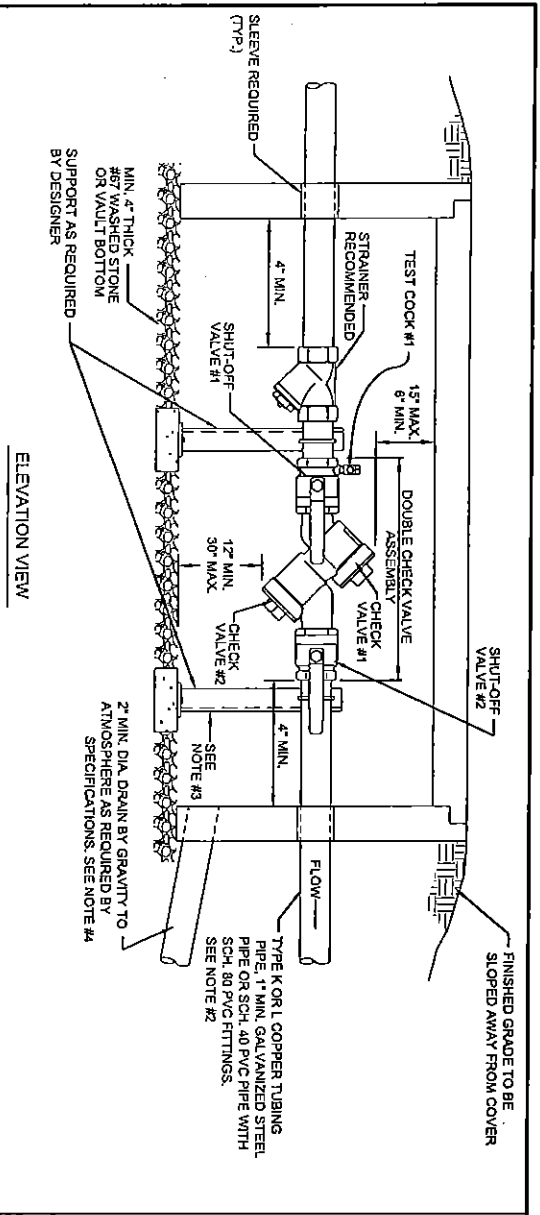


TYPICAL LOCATION REQUIREMENT FOR ABOVE GROUND INSTALLATION  
N.T.S.



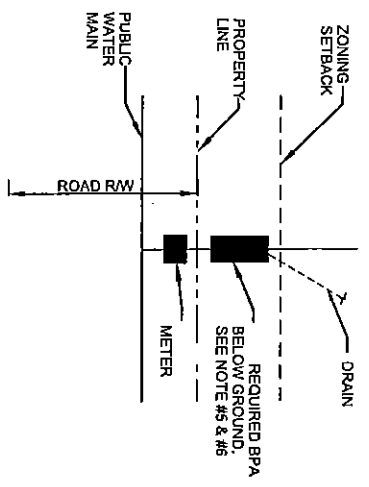
- NOTES:
1. BACKFLOW PREVENTION ASSEMBLIES (BPA'S) SHALL CONFORM TO SPECIFICATIONS. SHUT-OFF VALVES ARE SPECIFIC TO EACH APPROVED BPA AND NO SUBSTITUTIONS OF SHUT-OFF VALVES ARE PERMITTED.
  2. FIRE LINE SERVICES SHALL HAVE OUTSIDE STEM AND YOKE (OS & Y) HANDWHEEL OPERATORS, IF SERVING FIRE SPRINKLERS, TAMPER SWITCHES ARE REQUIRED.
  3. PIPE MATERIAL AND FITTINGS SHALL BE AS SPECIFIED IN STANDARDS SPECIFICATION. ALL JOINTS SHALL BE RESTRAINED WITH MEGALUG RESTRAINTS OR APPROVED EQUAL.
  4. SUPPORT OF ASSEMBLY SHALL BE DESIGNED BY OWNER, 8" - 12" SHALL BE SUPPORTED AT EACH VALVE.
  5. INSULATED ENCLOSURE SHALL BE AS SPECIFIED IN C ENCLOSURE INFORMATION - HEATED INSULATED ENCLOSURE ARE REQUIRED FOR FIRE LINE SERVICES. NO INSULATION SHALL BE WRAPPED AROUND BPA.
  6. ALL LOCATIONS FOR BPA'S REQUIRE APPROVAL AND MUST BE OUTSIDE OF ZONING SET-BACK.
  7. THERE SHALL BE NO TAPS, PIPING BRANCHES, UNAPPROVED BYPASS PIPING, HYDRANTS, FIRE DEPT. CONNECTION POINTS, OR OTHER WATER - USING APURTENANCES CONNECTED TO THE SUPPLY LINE BETWEEN ANY WATER METER AND ITS REQUIRED BACKFLOW PREVENTER.
  8. EACH REQUIRED BPA'S REQUIRED TO BE TESTED BY A CERTIFIED TESTER PRIOR TO PLACING THE WATER SYSTEM IN SERVICE.
  9. ALL BACKFLOW PREVENTERS INTENDED FOR ADDRESSING FROM THE APPROPRIATE REQUIREMENTS, REQUIRE PRIOR APPROVAL BACKFLOW INSPECTOR.





THE INTO CATCH BASIN OR STORMWATER MANHOLE PER DETAIL SHOWN ABOVE, NO THE IN TO STORMWATER PIPE WILL BE ACCEPTED.

- NOTES:
1. BACKFLOW PREVENTION ASSEMBLIES (BPA'S) SHALL CONFORM TO SPECIFICATIONS. SHUT-OFF VALVES ARE SPECIFIC TO EACH APPROVED BPA AND NO SUBSTITUTIONS OF SHUT-OFF VALVES ARE PERMITTED.
  2. PIPE MATERIAL AND FITTINGS SHALL BE AS SPECIFIED IN STANDARDS & SPECIFICATIONS.
  3. VAULT DOORS OR COVERS AND SUPPORT OF ASSEMBLY SHALL BE DESIGNED BY OWNER AND AS REQUIRED.
  4. DRAIN INLET MAY BE PROVIDED AS SHOWN OR AS FLOOR DRAIN.
  5. ALL LOCATIONS FOR BPA'S REQUIRE APPROVAL.
  6. THERE SHALL BE NO TAPS, PIPING BRANCHES, UNAPPROVED BYPASS PIPING, HYDRANTS, FIRE DEPT. CONNECTION POINTS, OR OTHER WATER - USING APPURTENANCES CONNECTED TO THE SUPPLY LINE BETWEEN ANY WATER METER AND ITS REQUIRED BACKFLOW PREVENTER.
  7. EACH REQUIRED BPA IS REQUIRED TO BE TESTED BY A CERTIFIED TESTER PRIOR TO PLACING THE WATER SYSTEM IN SERVICE.
  8. ALL BACKFLOW PREVENTERS INTENDED FOR ADDRESSING REQUIREMENTS, REQUIRE PRIOR APPROVAL FROM THE APPROPRIATE BACKFLOW INSPECTOR.



TYPICAL LOCATION REQUIREMENT FOR BELOW GROUND INSTALLATION  
N.T.S.

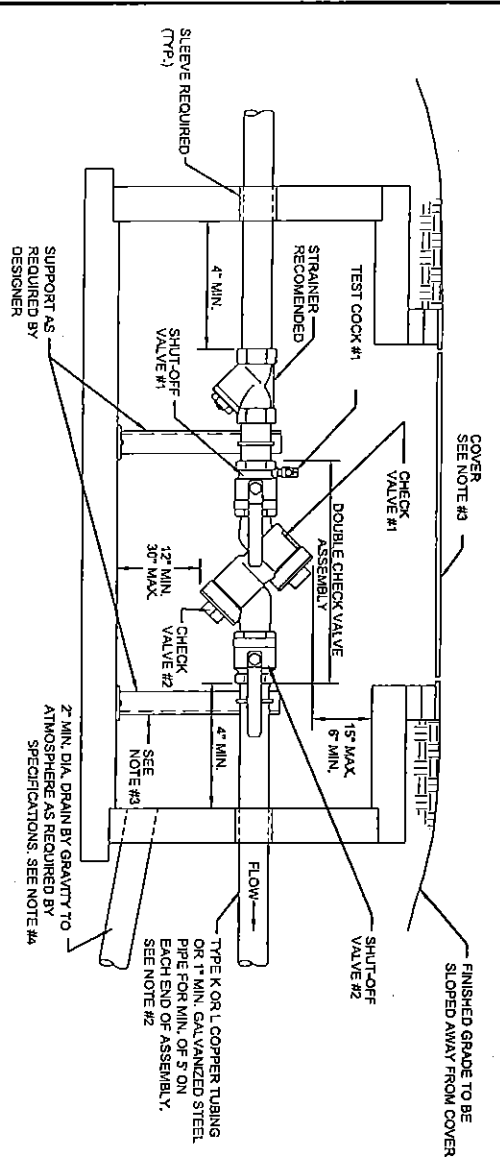
NO SCALE  
STANDARD NO. 5

VERSION NO.	VERSION DATE
1.1	2-13-15

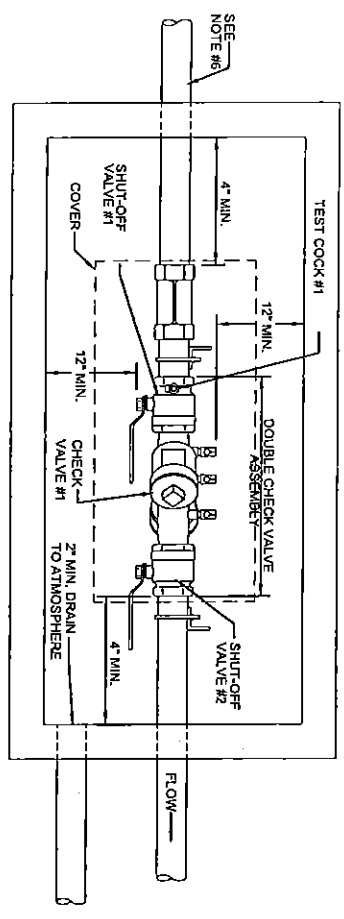


Town of Oriental  
STANDARD DETAILS  
BACKFLOW PREVENTION

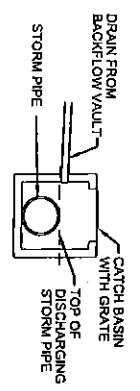
# DOUBLE CHECK VALVE ASSEMBLY (DC) 3/4" & 1" BELOW GROUND VAULT



ELEVATION VIEW

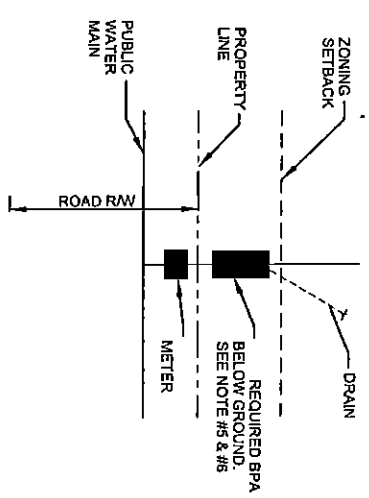


PLAN VIEW



THE INTO CATCH BASIN OR STORMWATER MANHOLE PER DETAIL SHOWN ABOVE. NO TIE IN TO STORMWATER PIPE WILL BE ACCEPTED.

- NOTES:
1. BACKFLOW PREVENTION ASSEMBLIES (BPAs) SHALL CONFORM TO SPECIFICATIONS. SHUT-OFF VALVES ARE SPECIFIC TO EACH APPROVED BPA AND NO SUBSTITUTIONS OF SHUT-OFF VALVES ARE PERMITTED. REFER TO APPROVED LIST OF BPAs.
  2. PIPE MATERIAL AND FITTINGS SHALL BE AS SPECIFIED IN STANDARDS & SPECIFICATIONS.
  3. VAULT, DOORS OR COVERS AND SUPPORT OF ASSEMBLY SHALL BE DESIGNED BY OWNER AND AS REQUIRED.
  4. DRAIN INLET MAY BE PROVIDED AS SHOWN OR AS FLOOR DRAIN.
  5. ALL LOCATIONS FOR BRAS REQUIRE APPROVAL.
  6. THERE SHALL BE NO TAPS, PIPING BRANCHES, UNAPPROVED BYPASS PIPING, HYDRANTS, FIRE DEPT. CONNECTION POINTS, OR OTHER WATER - USING APPURTENANCES CONNECTED TO THE SUPPLY LINE BETWEEN ANY WATER METER AND ITS REQUIRED BACKFLOW PREVENTER.
  7. EACH REQUIRED BPA IS REQUIRED TO BE TESTED BY A CERTIFIED TESTER PRIOR TO PLACING THE WATER SYSTEM IN SERVICE.
  8. ALL BACKFLOW PREVENTERS INTENDED FOR ADDRESSING FROM THE APPROPRIATE REQUIREMENTS, REQUIRE PRIOR APPROVAL BACKFLOW INSPECTOR.



TYPICAL LOCATION REQUIREMENT FOR BELOW GROUND INSTALLATION  
N.T.S.

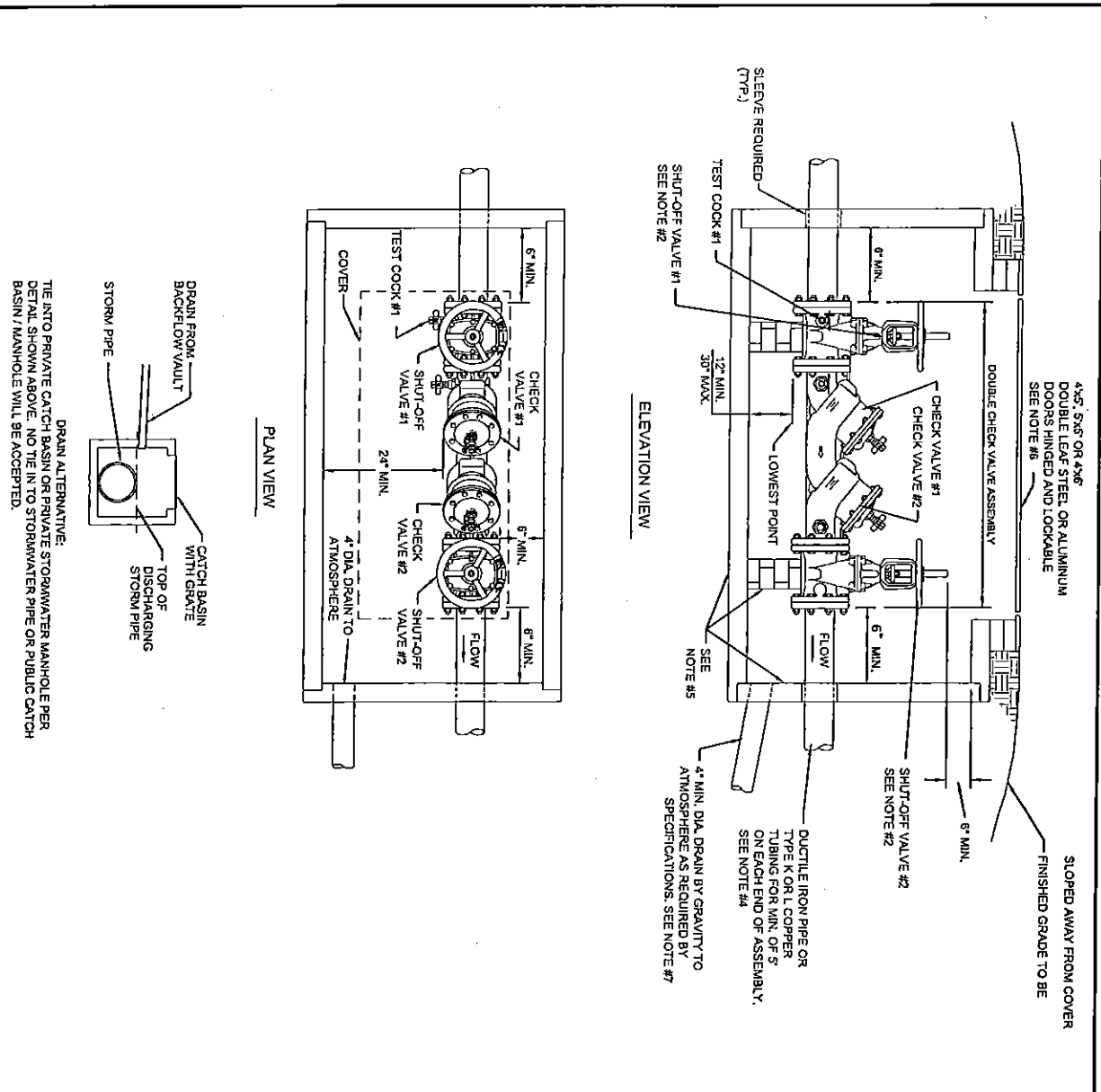
NO SCALE  
STANDARD NO.

6	
VERSION NO. 1.1	VERSION DATE 2-13-15

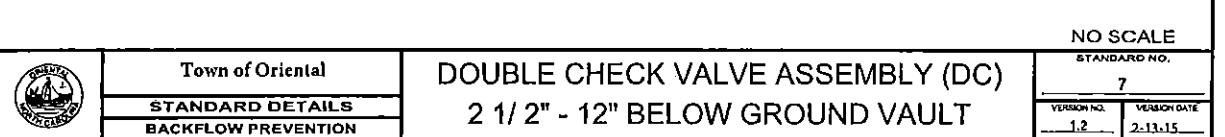
DOUBLE CHECK VALVE ASSEMBLY (DC)  
1 1/2" & 2" BELOW GROUND VAULT

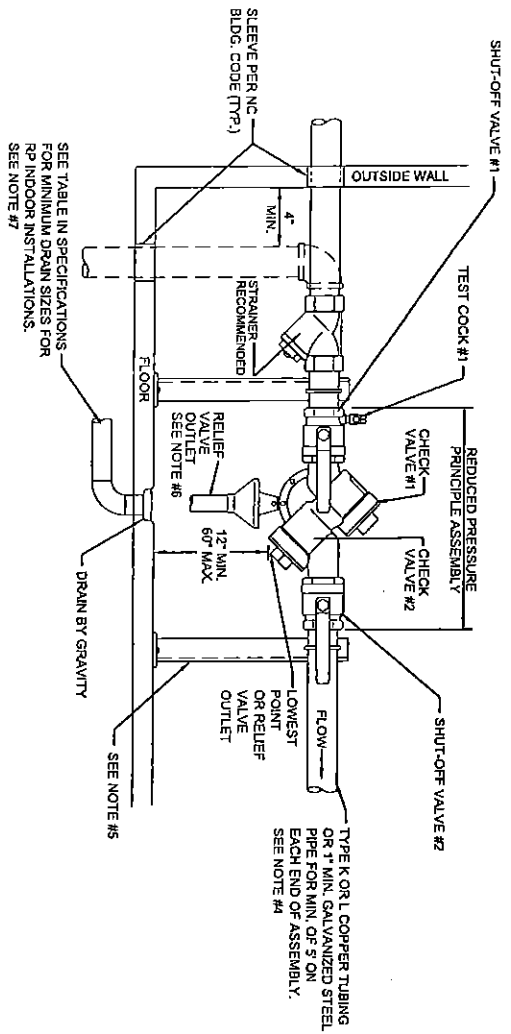
Town of Oriental  
STANDARD DETAILS  
BACKFLOW PREVENTION



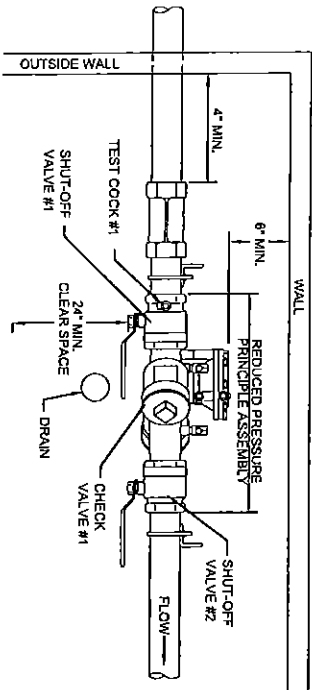


- NOTES:
1. BACKFLOW PREVENTION ASSEMBLIES (BPAs) SHALL CONFORM TO SPECIFICATIONS. SHUT-OFF VALVES ARE SPECIFIC TO EACH APPROVED BPA AND NO SUBSTITUTIONS OF SHUT-OFF VALVES ARE PERMITTED. REFER TO CMU APPROVED LIST OF BPAs.
  2. PIPE LINE SERVICES SHALL HAVE OUTSIDE STEM AND YOKE (OS & Y) HANDWHEEL OPERATORS. IF SERVING FIRE SPRINKLERS, TAMPER SWITCHES ARE REQUIRED.
  3. ASSEMBLIES SHALL BE INSTALLED UPRIGHT AND IN THE HORIZONTAL POSITION.
  4. PIPE MATERIAL AND FITTINGS SHALL BE AS SPECIFIED IN STANDARDS & SPECIFICATIONS.
  5. VAULT AND SUPPORT OF ASSEMBLY SHALL BE DESIGNED BY OWNER, 8" - 12" SHALL BE SUPPORTED AT EACH VALVE.
  6. ACCESS DOORS SHALL BE AS SPECIFIED IN WATER DETAILS #23, 25, OR 26 OR APPROVED EQUAL.
  7. DRAINAGE INLET MAY BE PROVIDED AS SHOWN OR AS FLOOR DRAIN.
  8. ALL LOCATIONS FOR BPAs REQUIRE APPROVAL.
  9. THERE SHALL BE NO TAPS, PIPING BRANCHES, UNAPPROVED BYPASS PIPING, HYDRANTS, FIRE DEPT. CONNECTION POINTS, OR OTHER WATER USING APPURTENANCES CONNECTED TO THE SUPPLY LINE BETWEEN ANY WATER METER AND ITS REQUIRED BACKFLOW PREVENTER.
  10. EACH APPROVED BPA IS REQUIRED TO BE TESTED BY A APPROVED CERTIFIED TESTER PRIOR TO PLACING THE WATER SYSTEM IN SERVICE.
  11. ALL BACKFLOW PREVENTERS INTENDED FOR ADDRESSING REQUIREMENTS, REQUIRE PRIOR APPROVAL FROM THE APPROPRIATE REQUIREMENTS, REQUIRE PRIOR APPROVAL BACKFLOW INSPECTOR.



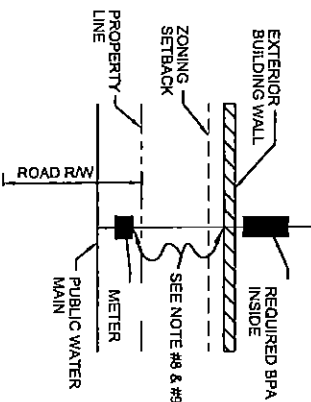


ELEVATION VIEW



PLAN VIEW

- NOTES:
- INDOOR INSTALLATION SHALL ONLY BE PERMITTED IN CASES WHERE ADEQUATE SPACE FOR THE BACKFLOW PREVENTION ASSEMBLY IS NOT AVAILABLE OUTSIDE.
  - BACKFLOW PREVENTION ASSEMBLIES (BPA'S) SHALL CONFORM TO SPECIFICATIONS. SHUT-OFF VALVES ARE SPECIFIC TO EACH APPROVED BPA AND NO SUBSTITUTIONS OF SHUT-OFF VALVES ARE PERMITTED.
  - ASSEMBLIES SHALL BE INSTALLED UPRIGHT AND IN THE HORIZONTAL POSITION.
  - PIPE MATERIAL AND FITTINGS SHALL BE AS SPECIFIED IN STANDARDS & SPECIFICATIONS.
  - SUPPORT FOR ASSEMBLY SHALL BE DESIGNED BY OWNER AS REQUIRED.
  - AN AIR GAP DRAIN IS RECOMMENDED TO REDUCE SPLASHING OF MINOR DISCHARGES FROM THE RELIEF VALVE DRAIN PORT.
  - INDOOR INSTALLATION OF RPS SHOULD PROVIDE FOR DRAINAGE CAPABLE OF HANDLING IN EXCESS OF THE MAXIMUM DISCHARGE RATE EXPECTED BY THE BACKFLOW ASSEMBLY MANUFACTURER.
  - ALL LOCATIONS FOR BPA'S REQUIRE APPROVAL.
  - THERE SHALL BE NO TAPS, PIPING BRANCHES, UNAPPROVED BYPASS PIPING, HYDRANTS, FIRE DEPT. CONNECTION POINTS, OR OTHER WATER- USING APURTENANCES CONNECTED TO THE SUPPLY LINE BETWEEN ANY WATER METER AND ITS REQUIRED BACKFLOW PREVENTER.
  - EACH REQUIRED BPA IS REQUIRED TO BE TESTED BY A CERTIFIED TESTER PRIOR TO PLACING THE WATER SYSTEM IN SERVICE.
  - ALL BACKFLOW PREVENTERS INTENDED FOR ADDRESSING REQUIREMENTS, REQUIRE PRIOR APPROVAL FROM THE APPROPRIATE REQUIREMENTS, REQUIRE PRIOR APPROVAL BACKFLOW INSPECTOR.



TYPICAL LOCATION REQUIREMENT FOR INSIDE INSTALLATION N.T.S.

NO SCALE  
STANDARD NO.

8

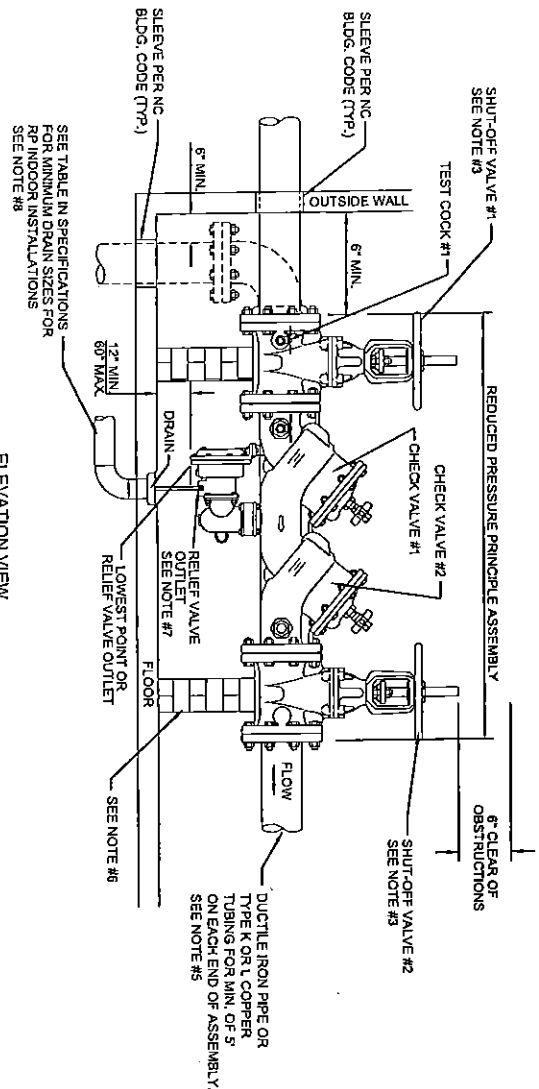
VERSION NO. 1.1  
VERSION DATE 2-13-15

REDUCED PRESSURE PRINCIPLE ASSEMBLY (RP) 3/4" - 2" INDOOR

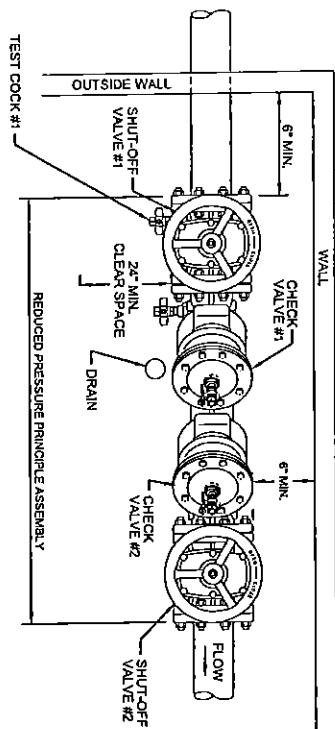
Town of Oriental  
STANDARD DETAILS  
BACKFLOW PREVENTION







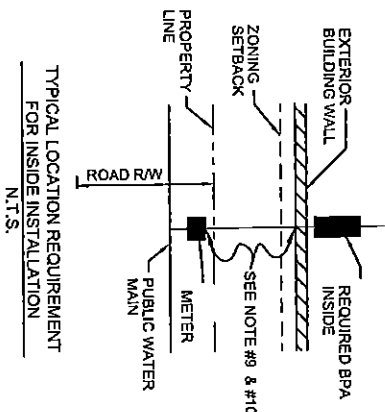
ELEVATION VIEW



PLAN VIEW

NOTES:

1. INDOOR INSTALLATION SHALL ONLY BE PERMITTED IN CASES WHERE ADEQUATE SPACE FOR THE BACKFLOW PREVENTION ASSEMBLY IS NOT AVAILABLE OUTSIDE.
2. BACKFLOW PREVENTION ASSEMBLIES (BPAs) SHALL CONFORM TO SPECIFICATIONS. SHUT-OFF VALVES ARE SPECIFIC TO EACH APPROVED BPA AND NO SUBSTITUTIONS OF SHUT-OFF VALVES ARE PERMITTED. REFER TO APPROVED LIST OF BPAs.
3. FIRE LINE INSTALLATIONS SHALL HAVE OUTSIDE STEM AND YOKE (OS&Y) HANDWHEEL OPERATORS. IF SERVING FIRE SPRINKLERS, TAMPER SWITCHES ARE REQUIRED.
4. ASSEMBLIES SHALL BE INSTALLED UPRIGHT AND IN THE HORIZONTAL POSITION.
5. PIPE MATERIAL AND FITTINGS SHALL BE AS SPECIFIED IN C STANDARDS & SPECIFICATIONS.
6. SUPPORT FOR ASSEMBLY SHALL BE DESIGNED BY OWNER. 8" - 12" SHALL BE SUPPORTED AT EACH VALVE AND SHALL NOT BLOCK RELIEF VALVE ON DRAIN PORT.
7. AN AIR GAP DRAIN IS RECOMMENDED TO REDUCE SPLASHING OF MINOR DISCHARGES FROM THE RELIEF VALVE DRAIN PORT.
8. INDOOR INSTALLATION OF RP'S SHOULD PROVIDE FOR DRAINAGE CAPABLE OF HANDLING IN EXCESS OF THE MAXIMUM DISCHARGE RATE EXPECTED BY THE BACKFLOW ASSEMBLY MANUFACTURER.
9. ALL LOCATIONS FOR BPAs REQUIRE APPROVAL.
10. THERE SHALL BE NO TAPS, BRANCHES, UNAPPROVED BYPASS PIPING, HYDRANTS, FIRE DEPT. CONNECTION POINTS, OR OTHER WATER UTILITIES APPLICANCES CONNECTED TO THE SUPPLY LINE BETWEEN ANY WATER METER AND ITS BACKFLOW PREVENTER.
11. EACH REQUIRED BPA IS REQUIRED TO BE TESTED BY A CERTIFIED TESTER PRIOR TO PLACING THE WATER SYSTEM IN SERVICE.
12. ALL BACKFLOW PREVENTERS INTENDED FOR ADDRESSING REQUIREMENTS, REQUIRE PRIOR APPROVAL FROM THE APPROPRIATE BACKFLOW INSPECTOR.



TYPICAL LOCATION REQUIREMENT FOR INSIDE INSTALLATION  
N.T.S.

NO SCALE  
STANDARD NO.

9

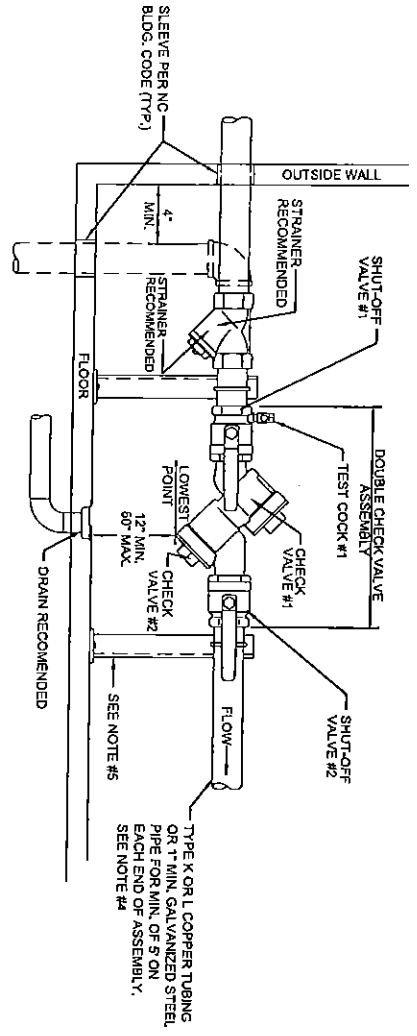
VERSION NO. 1.2      VERSION DATE 2-13-15

REDUCED PRESSURE PRINCIPLE ASSEMBLY (RP) 2 1/2" - 12" INDOOR

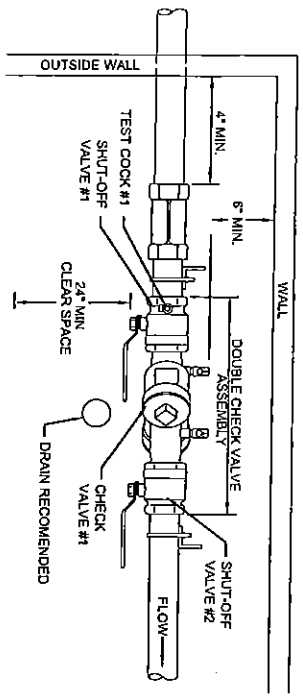
Town of Oriental

STANDARD DETAILS  
BACKFLOW PREVENTION



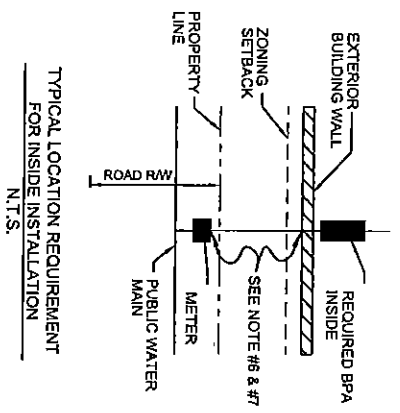


ELEVATION VIEW

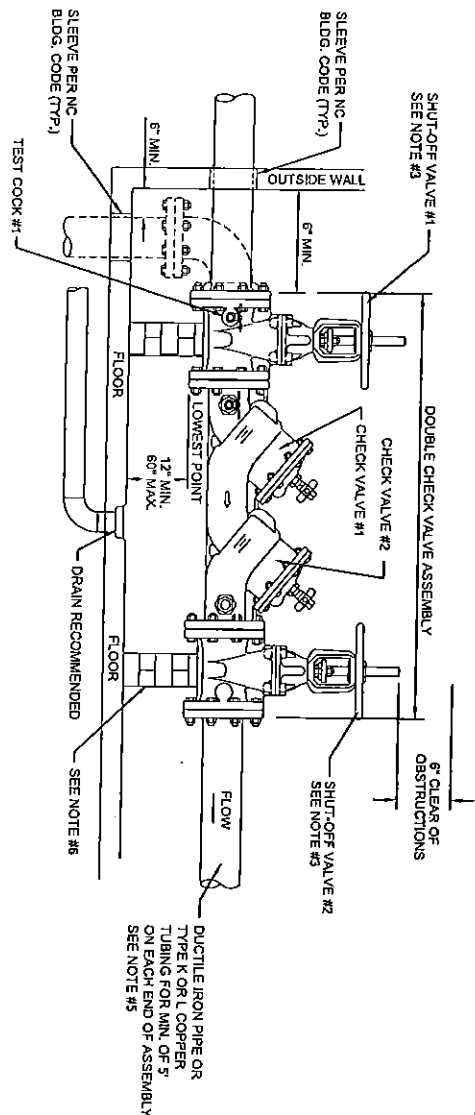


PLAN VIEW

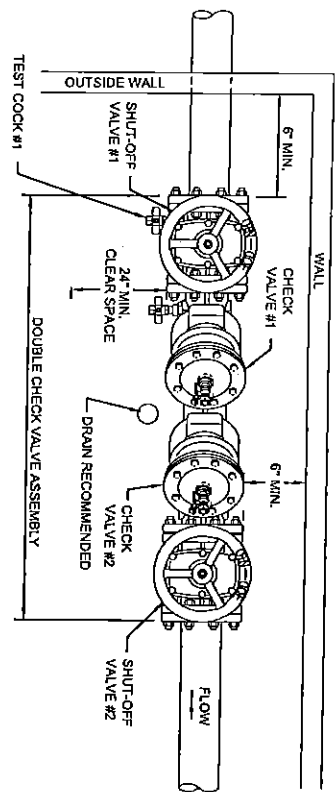
- NOTES:
- INDOOR INSTALLATION SHALL ONLY BE PERMITTED IN CASES WHERE ADEQUATE SPACE FOR THE BACKFLOW PREVENTION ASSEMBLY IS NOT AVAILABLE OUTSIDE. ( ) WILL REVIEW ON A CASE BY CASE BASIS.
  - BACKFLOW PREVENTION ASSEMBLIES (BPAs) SHALL CONFORM TO SPECIFICATIONS. SHUT-OFF VALVES ARE SPECIFIC TO EACH APPROVED BPA AND NO SUBSTITUTIONS OF SHUT-OFF VALVES ARE PERMITTED. REFER TO APPROVED LIST OF BPAs.
  - ASSEMBLIES SHALL BE INSTALLED UPRIGHT AND IN THE HORIZONTAL POSITION.
  - PIPE MATERIAL AND FITTINGS SHALL BE AS SPECIFIED IN ( ) STANDARDS & SPECIFICATIONS.
  - SUPPORT FOR ASSEMBLY SHALL BE DESIGNED BY OWNER AS REQUIRED.
  - ALL LOCATIONS FOR BPAs REQUIRE APPROVAL.
  - THERE SHALL BE NO TAPS, PIPING BRANCHES, UNAPPROVED BYPASS PIPING, HYDRANTS, FIRE DEPT. CONNECTION POINTS, OR OTHER WATER-USING APPLIANCES CONNECTED TO THE SUPPLY LINE BETWEEN ANY WATER METER AND ITS REQUIRED BACKFLOW PREVENTER.
  - EACH CMU-REQUIRED BPA IS REQUIRED TO BE TESTED BY A CERTIFIED TESTER PRIOR TO PLACING THE WATER SYSTEM IN SERVICE.
  - ALL BACKFLOW PREVENTERS INTENDED FOR ADDRESSING FROM THE APPROPRIATE REQUIREMENTS, REQUIRE PRIOR APPROVAL BACKFLOW INSPECTOR.



TYPICAL LOCATION REQUIREMENT FOR INSIDE INSTALLATION N.T.S.

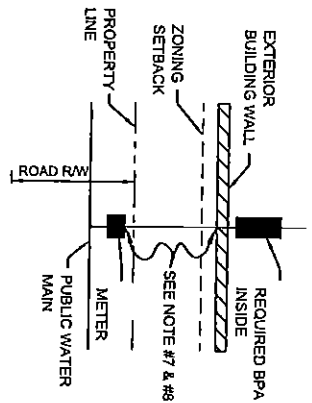


ELEVATION VIEW

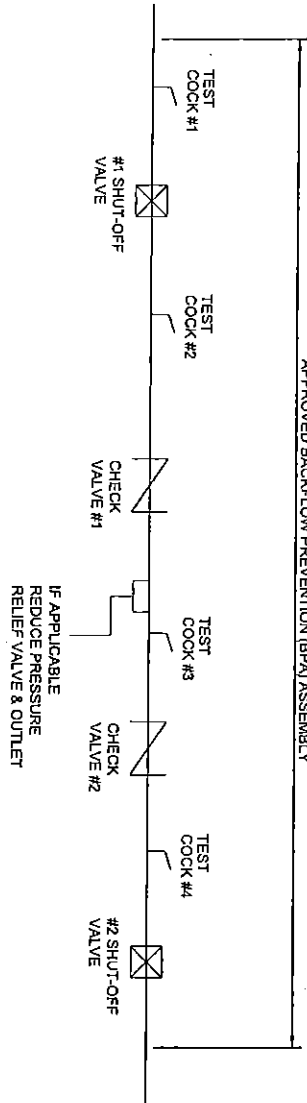


PLAN VIEW

- NOTES:
1. INDOOR INSTALLATION SHALL ONLY BE PERMITTED IN CASES WHERE ADEQUATE SPACE FOR THE BACKFLOW PREVENTION ASSEMBLY IS NOT AVAILABLE OUTSIDE.
  2. BACKFLOW PREVENTION ASSEMBLIES (BPA's) SHALL CONFORM TO SPECIFICATIONS. SHUT-OFF VALVES ARE SPECIFIC TO EACH APPROVED BPA AND NO SUBSTITUTIONS OF SHUT-OFF VALVES ARE PERMITTED.
  3. FIRE LINE INSTALLATIONS SHALL HAVE OUTSIDE STEM AND YOKE (OS&Y) HANDWHEEL OPERATORS. IF SERVING FIRE SPRINKLERS, TAMPER SWITCHES ARE REQUIRED.
  4. ASSEMBLIES SHALL BE INSTALLED UPRIGHT AND IN THE HORIZONTAL POSITION.
  5. PIPE MATERIAL AND FITTINGS SHALL BE AS SPECIFIED IN STANDARDS & SPECIFICATIONS.
  6. SUPPORT FOR ASSEMBLY SHALL BE DESIGNED BY OWNER, 8" - 12" SHALL BE SUPPORTED AT EACH VALVE.
  7. ALL LOCATIONS FOR BPAS REQUIRE APPROVAL
  8. THERE SHALL BE NO TAPS, PIPING BRANCHES, UNAPPROVED BYPASS PIPING, HYDRANTS, FIRE DEPT. CONNECTION POINTS, OR OTHER WATER - USING APURTENANCES CONNECTED TO THE SUPPLY LINE BETWEEN ANY WATER METER AND ITS REQUIRED BACKFLOW PREVENTER.
  9. EACH REQUIRED BPA IS REQUIRED TO BE TESTED BY A CERTIFIED TESTER PRIOR TO PLACING THE WATER SYSTEM IN SERVICE.
  10. ALL BACKFLOW PREVENTERS INTENDED FOR ADDRESSING REQUIREMENTS, REQUIRE PRIOR APPROVAL FROM THE APPROPRIATE BACKFLOW INSPECTOR.



TYPICAL LOCATION REQUIREMENT FOR INSIDE INSTALLATION  
N.T.S.



APPROVED BACKFLOW PREVENTION (BPA) ASSEMBLY

NO SCALE



Town of Oriental

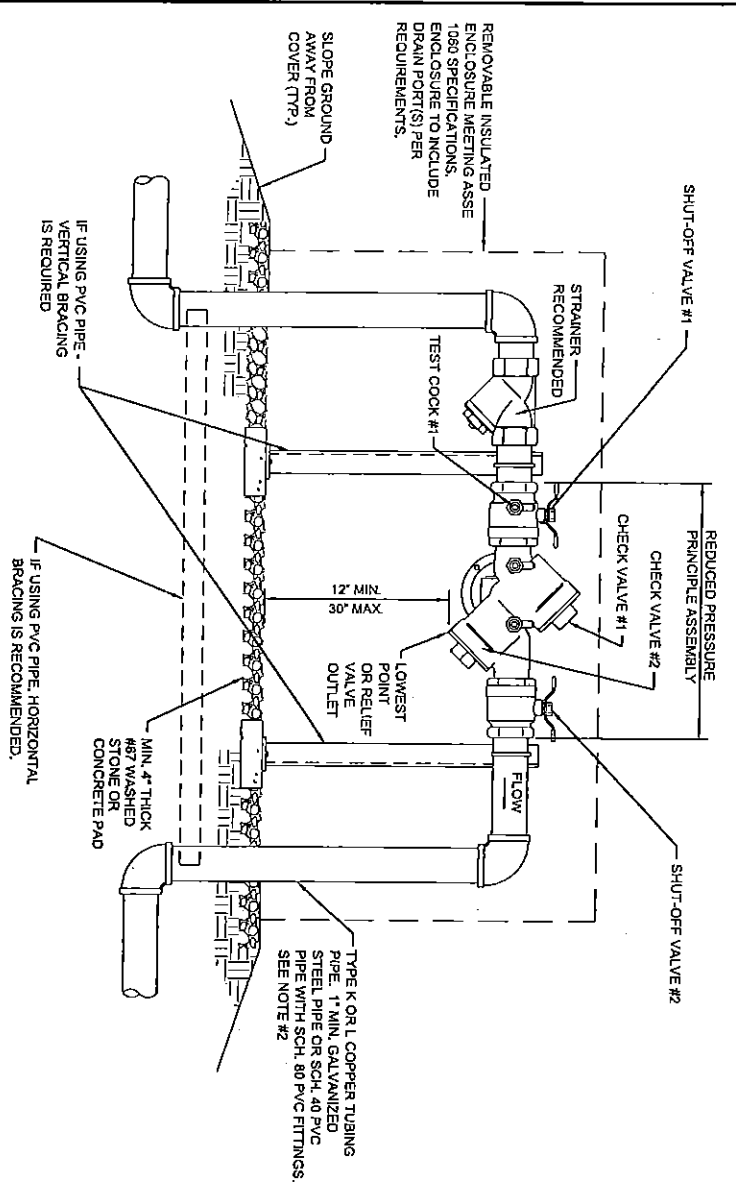
STANDARD DETAILS  
BACKFLOW PREVENTION

TEST COCK LOCATION

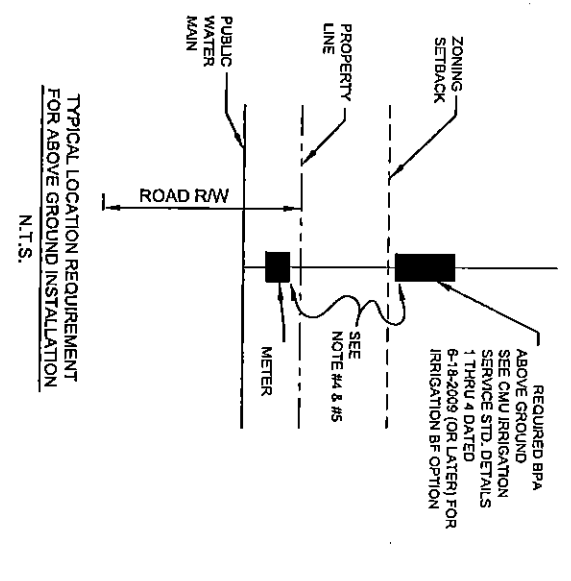
STANDARD NO.

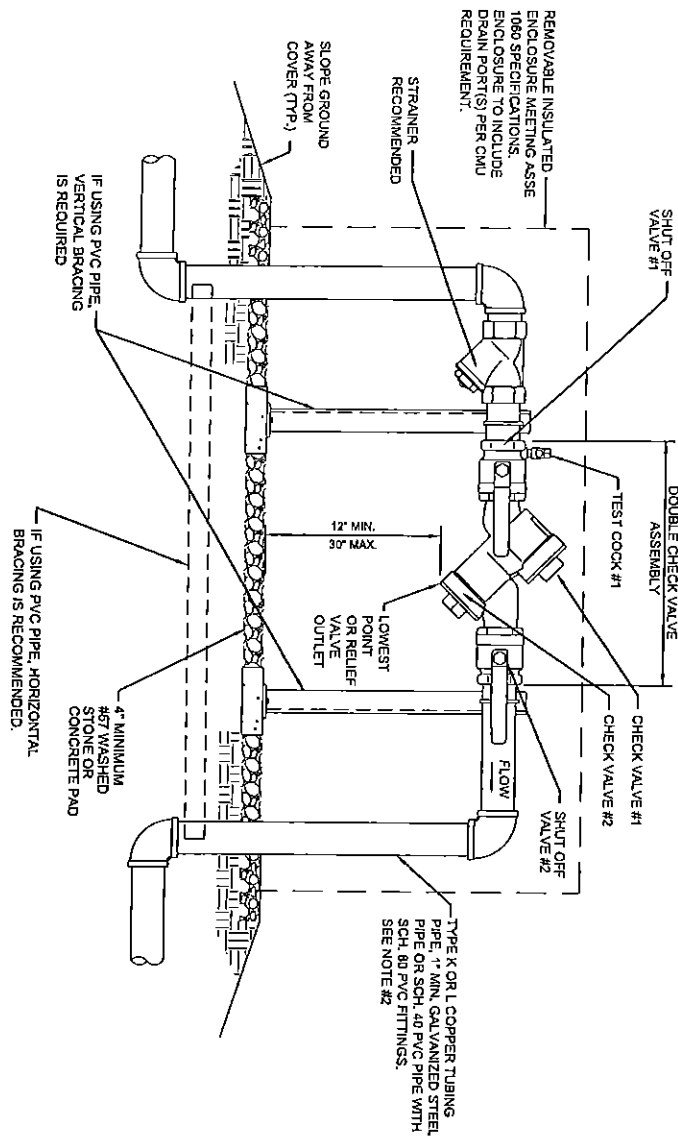
12

VERSION NO.	VERSION DATE
1.1	2-13-15



- NOTES:
1. BACKFLOW PREVENTION ASSEMBLIES (BPA'S) SHALL CONFORM TO SPECIFICATIONS. SHUT-OFF VALVES ARE SPECIFIC TO EACH APPROVED BPA AND NO SUBSTITUTIONS OF SHUT-OFF VALVES ARE PERMITTED.
  2. PIPE MATERIAL AND FITTINGS SHALL BE AS SPECIFIED IN STANDARDS & SPECIFICATIONS. IF USING PVC PIPE / FITTINGS, VERTICAL SUPPORT IS REQUIRED AND HORIZONTAL BRACING IS RECOMMENDED.
  3. INSULATED ENCLOSURE SHALL BE AS SPECIFIED IN ENCLOSURE INFORMATION - HEATED INSULATED ENCLOSURE IS RECOMMENDED. NO INSULATION SHALL BE WRAPPED AROUND BPA.
  4. ALL LOCATIONS FOR BPA'S REQUIRE APPROVAL AND MUST BE OUTSIDE OF ZONING SET-BACK.
  5. THERE SHALL BE NO TAPS, PIPING BRANCHES, UNAPPROVED BYPASS PIPING, HYDRANTS, FIRE DEPT. CONNECTION POINTS, OR OTHER WATER-USING APPLIANCES CONNECTED TO THE SUPPLY LINE BETWEEN ANY WATER METER AND ITS REQUIRED BACKFLOW PREVENTER.
  6. EACH REQUIRED BPA IS REQUIRED TO BE TESTED BY A CERTIFIED TESTER PRIOR TO PLACING THE WATER SYSTEM IN SERVICE.
  7. ALL BACKFLOW PREVENTERS INTENDED FOR ADDRESSING REQUIREMENTS, REQUIRE PRIOR APPROVAL FROM THE APPROPRIATE BACKFLOW INSPECTOR.





- NOTES:
1. BACKFLOW PREVENTION ASSEMBLIES (BPAs) SHALL CONFORM TO SPECIFICATIONS. SHUT-OFF VALVES ARE SPECIFIC TO EACH APPROVED BPA AND NO SUBSTITUTIONS OF SHUT-OFF VALVES ARE PERMITTED.
  2. PIPE MATERIAL AND FITTINGS SHALL BE AS SPECIFIED IN STANDARDS & SPECIFICATIONS.
  3. INSULATED ENCLOSURE SHALL BE AS SPECIFIED IN ENCLOSURE INFORMATION - HEATED INSULATED ENCLOSURE IS RECOMMENDED. NO INSULATION SHALL BE WRAPPED AROUND BPA.
  4. ALL LOCATIONS FOR BPAs REQUIRE APPROVAL AND MUST BE OUTSIDE OF ZONING SET-BACK.
  5. THERE SHALL BE NO TAPS, PIPING BRANCHES, UNAPPROVED BYPASS PIPING, HYDRANTS, FIRE DEPT. CONNECTION POINTS OR OTHER WATER - USING APPURTENANCES CONNECTED TO THE SUPPLY LINE BETWEEN ANY WATER METER AND ITS REQUIRED BACKFLOW PREVENTER.
  6. EACH REQUIRED BPAs REQUIRED TO BE TESTED BY A CERTIFIED TESTER PRIOR TO FLAGGING THE WATER SYSTEM IN SERVICE.
  7. ALL BACKFLOW PREVENTERS INTENDED FOR ADDRESSING FROM THE APPROPRIATE REQUIREMENTS, REQUIRE PRIOR APPROVAL BACKFLOW INSPECTOR.

